

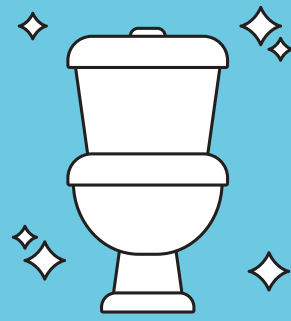
# INFECTIOUS DISEASE

## 1 VIRAL SHEDDING

People with infectious diseases, like COVID-19, can shed the virus in their feces. The virus is flushed down the toilet and travels through the sewage system to Marin County sanitary districts.



## 2 COLLECTION & LAB TESTING

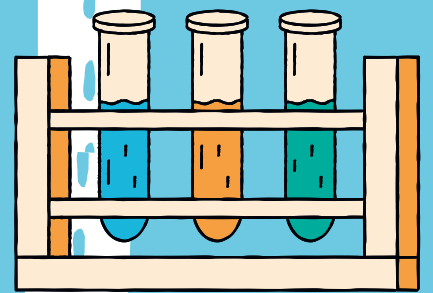


Verily's WastewaterSCAN program analyzes samples to measure virus levels at each collection site



## 3 ANALYSIS

Epidemiological analysis tracks and compares viral wastewater levels by combining data from each collection site.



## 4 COMMUNICATION & RESPONSE

Marin County Public Health's Wastewater Surveillance program tracks virus levels and acts when levels signal a potential threat.

