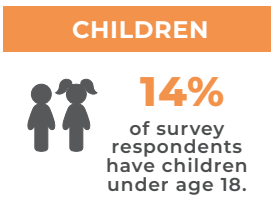
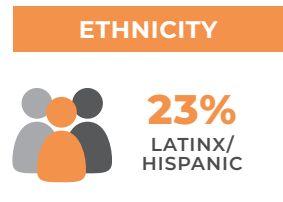
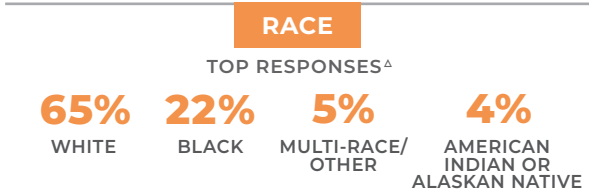
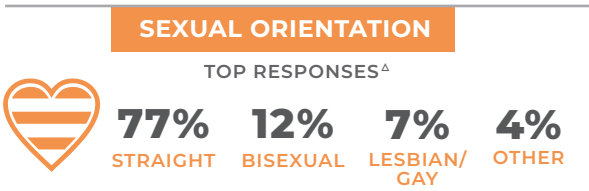
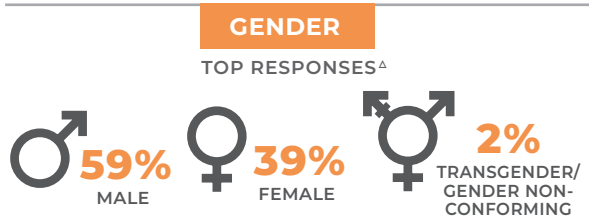
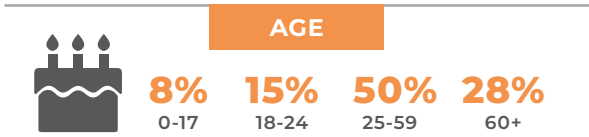
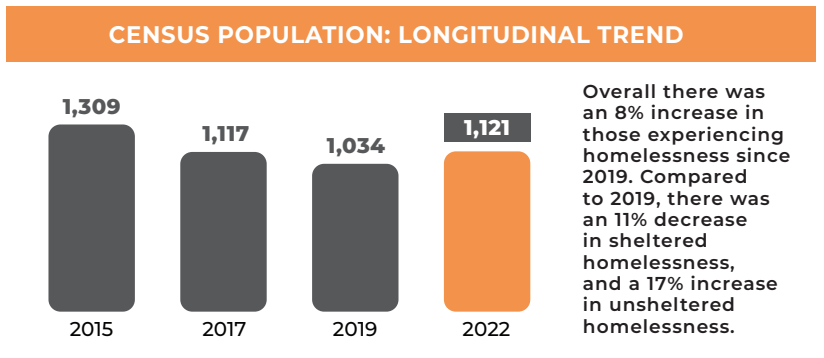
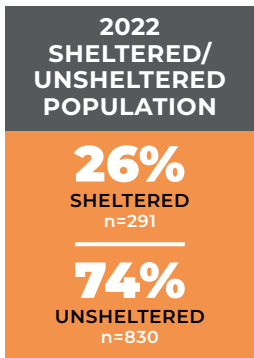


MARIN COUNTY

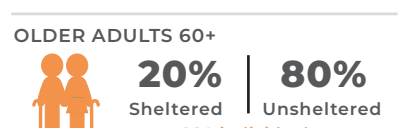
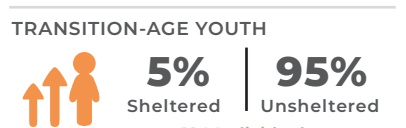
2022 HOMELESS POINT-IN-TIME COUNT & SURVEY

Every two years, communities across the country conduct comprehensive counts of the local homeless populations in order to measure the prevalence of homelessness in each local Continuum of Care.

The 2022 Marin County Point-in-Time Count was a community-wide effort conducted on February 17, 2022. In the weeks following the street count, a survey was administered to 359 unsheltered and sheltered individuals experiencing homelessness in order to profile their experience and characteristics.



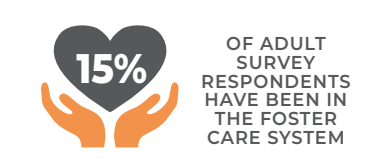
SUBPOPULATION* DATA:



EDUCATION



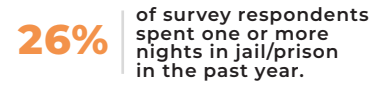
FOSTER CARE



EMPLOYMENT STATUS



JUSTICE SYSTEM INVOLVEMENT



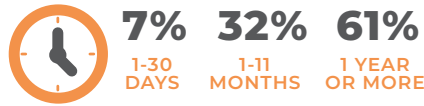
PRIMARY CONDITION THAT LEAD TO HOMELESSNESS+



DOMESTIC VIOLENCE

5% reported they were currently experiencing domestic violence

DURATION OF CURRENT EPISODE OF HOMELESSNESS



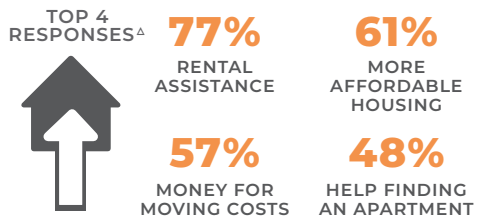
FIRST EPISODE OF HOMELESSNESS



AGE AT FIRST EPISODE OF HOMELESSNESS

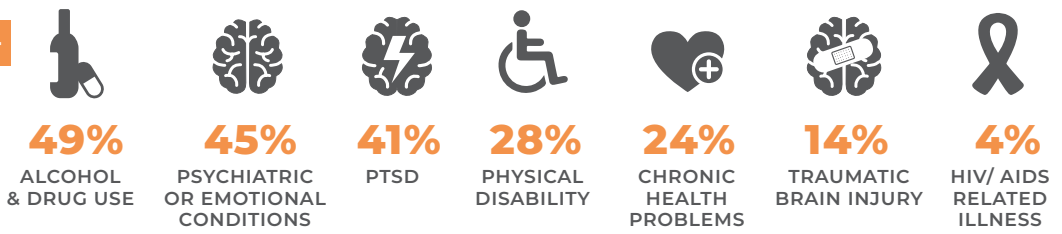


HELP NEEDED TO OBTAIN PERMANENT HOUSING+



SELF REPORTED HEALTH+

Current health conditions that may affect the housing stability or employment of those experiencing homelessness.



DISABLING CONDITIONS



A disabling condition is defined by HUD as a developmental disability, HIV/AIDS, or a long-term physical or mental impairment that impacts a person's ability to live independently but could be improved with stable housing.

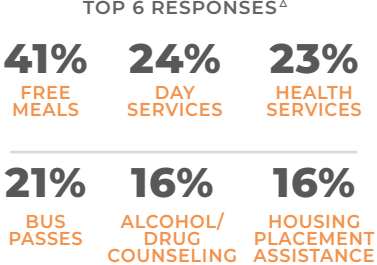
GOVERNMENT SERVICES AND ASSISTANCE

63% of survey respondents reported receiving government benefits

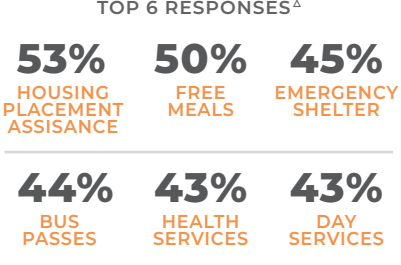
COVID-19



SERVICES CURRENTLY ACCESSING+



SERVICES REQUESTED+



*SUBPOPULATION DEFINITIONS

CHRONICALLY HOMELESS

An individual with one or more disabling conditions or a family with a head of household with a disabling condition who:

- Has been continuously homeless for 1 year or more and/or;
- Has experienced 4 or more episodes of homelessness within the past 3 years.

VETERANS

Persons who have served on active duty in the Armed Forces of the United States. This does not include inactive military reserves or the National Guard unless the person was called up to active duty.

FAMILIES

A household with at least one adult member (persons 18 or older) and at least one child member (persons under 18).

UNACCOMPANIED YOUTH & YOUNG ADULTS

Children under the age of 18 and young adults ages 18 through 24 Transition-Age Youth who are experiencing homelessness and living without a parent or legal guardian.

+ Multiple response question, results may not add up to 100%.
Δ Only displaying top responses.
Note: Some percentages may not add up to 100% due to rounding.

The complete comprehensive report includes a more detailed profile of the characteristics of those experiencing homelessness in Marin County. It is available at housingfirst.marinhhs.org/point-time-count
Source: Burr, J., Click, K., Salcedo, J., & Nybank, J. (2022). 2022 County of Marin Point-in-Time Report on Homelessness.